



## Presentation Objectives

- Trex Products
- Commercial Recycling
- Community Outreach
- Involvement with Recycling Partners
- Questions



## Founded on Recycling Principles



- Founded in 1996, as the first company to combine the durability of recycled plastic with the natural beauty of reclaimed wood to create in a high-performance decking product
- Largest domestic recycler of polyethylene film and packaging
- Over 25 years experience of PE recycling
- Recycle over 200 million pound per year for the past 15 years



Proprietary and Confidential Information

3

## Products: Trex Decking



### Trex Decking

- Decking boards are made of 50% recycled PE film and 50% wood bi-product
- Trex has 4 decking lines and 18 decking colors
- Two manufacturing plants: Virginia and Nevada
- Sold in U.S. and 43 countries



Proprietary and Confidential Information

4

## Decking: Green Ingredients



Trex decking boards are made post consumer recycled polyethylene film/packaging and bi-product scrap sawdust

- Sawdust procured from flooring and cabinet manufacturers
- Polyethylene film purchased from various commercial and community resources
- Trex recycles 200 million pounds of sawdust and polyethylene film each year



**MADE**  
IN THE USA  
★★★★★

Proprietary and Confidential Information

5

## Production of Decking



**MADE**  
IN THE USA  
★★★★★

Proprietary and Confidential Information

6

**Products:**  
**Trex Recycled Poly Pellets**



*Trex is revolutionizing the world of plastic recycling in a new way. Thanks to over 20 years of plastic film recycling experience from our decking and railing operations, Trex now has developed an innovative process to produce a linear low density recycled pellet from post-consumer materials.*



VAR 1040

**ICC Certified:** Trex Cardinal™ and Trex Spartan™ pellets are made of 100% consumer film. Our LLDPE pellets will satisfy your recycled content requirements.



Proprietary and Confidential Information

7

**Products:**  
**Trex Recycled Poly Pellet**



**Environmentally Responsible:** 100% recycled LLDPE films, no virgin plastic or industrial films – a true “green” pellet.

**Consistent Availability:** Our proprietary process creates a steady consistent and uniform pellet from box-to-box and lot-to-lot.

**Competitively Priced:** Abundant raw material supplies and lean processes make our pellets competitive in all markets.

**Wide Applications:** Irrigation tubing, packaging, plastic bags, and liners - our pellets take many shapes.

**We created two select pellet grades for a variety of uses.**  
*Which is right for you? It is all about your process:*

- Spartan™ pellets are for general purpose applications.
- Cardinal™ pellets were developed specifically for advanced and refined applications.



Proprietary and Confidential Information

8

## Pellet Applications



Trex LLDPE recycled pellets can be used to manufacture:

- Totes
- Can liners
- Irrigation tubing
- Reusable plastic bags
- Flower pots



**MADE**  
IN THE USA  
★★★★★

Proprietary and Confidential Information

9

## Commercial Recycling Benefits



- Audit plastic film generation
- Trex pays a fair market price for your baled material
- Trex will pick up your baled material
- Provide a road-worthy trailer for high volume suppliers



**MADE**  
IN THE USA  
★★★★★

Proprietary and Confidential Information

10

## Consumer Polyethylene Films Recycling Streams



- Stretch film and pallet wrap
- Furniture foam wrap
- Bubble wrap
- Grocery bags
- Case overwrap
- Bread bags
- Dry cleaning bags
- Newspaper sleeves
- Produce bags
- Cereal bags
- Paper towel / toilet paper overwrap
- Ziploc or food storage bags
- Ice bags (DRY – without metal clips)
- Mattress bags
- Wood pellet bags



Proprietary and Confidential Information

11

## Community Outreach and Litter Prevention



### Promote Plastic Film and Packaging Recycling



- **Communicate – Who can promote the recycling of plastic film & bag?**
  - Recyclers
  - Film and Bag Manufacturers
  - Retailers
  - Schools
  - Recycling Coordinators
  - Municipalities
  - Trade Associations
  - Environmental Groups
  - Legislators
  - General Public
- **Collect - Where can we collect and capture bags & films for recycling?**
  - Retailers / Shopping Centers
  - Grocers
  - Municipal Recycling Centers
  - Schools
  - Offices
- **Consolidate – What are the best locations for bag & film recycling consolidation?**
  - Distribution Centers
  - Recyclers
  - Municipal Consolidation Programs



Proprietary and Confidential Information

12

## School Film Recycling Challenge: Educate the Next Generation



- The school recycling program began in 2006
- The objective of the 'Challenge' is to:
  - Educate students on the importance of recycling
  - Keep plastic out of the landfills
- Over 600 schools participate across the US and in Canada



Bench awarded to winning schools



## Plastic Film Recycling Challenge



- The 'Challenge' begins on America Recycles Day (Nov 15) and ends on Earth Day (April 22)
- Schools competitions to collect plastic bags and packaging to recycle
- Trex provides schools with recycling bins, a poster and magnets
- The winning schools are awarded a bench made from Trex and each participating school receives a bird feeder
- 600+ schools participated nationwide and 175 schools in Manitoba, Canada



Example of magnet and poster provided to schools



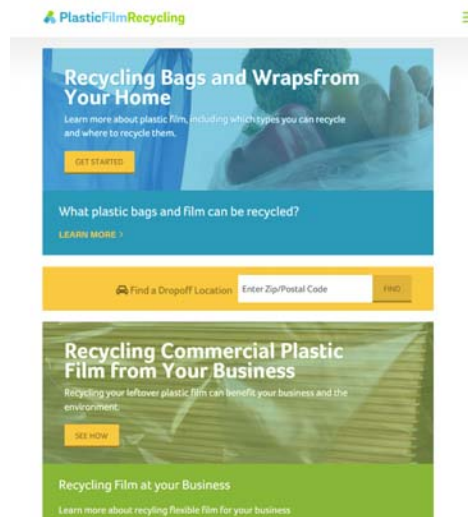
### Other Promotion:

Trex's Material Source Group exhibits at many trade organizations to promote film recycling



**KEEP AMERICA BEAUTIFUL**

### www.plasticfilmrecycling.org





## Trex Provides Testing for How 2 Recycle Label



**SUSTAINABLE PACKAGING COALITION®**  
A PROJECT OF GREENBLUE



↓





Proprietary and Confidential Information 17

## Practice the 4 R's



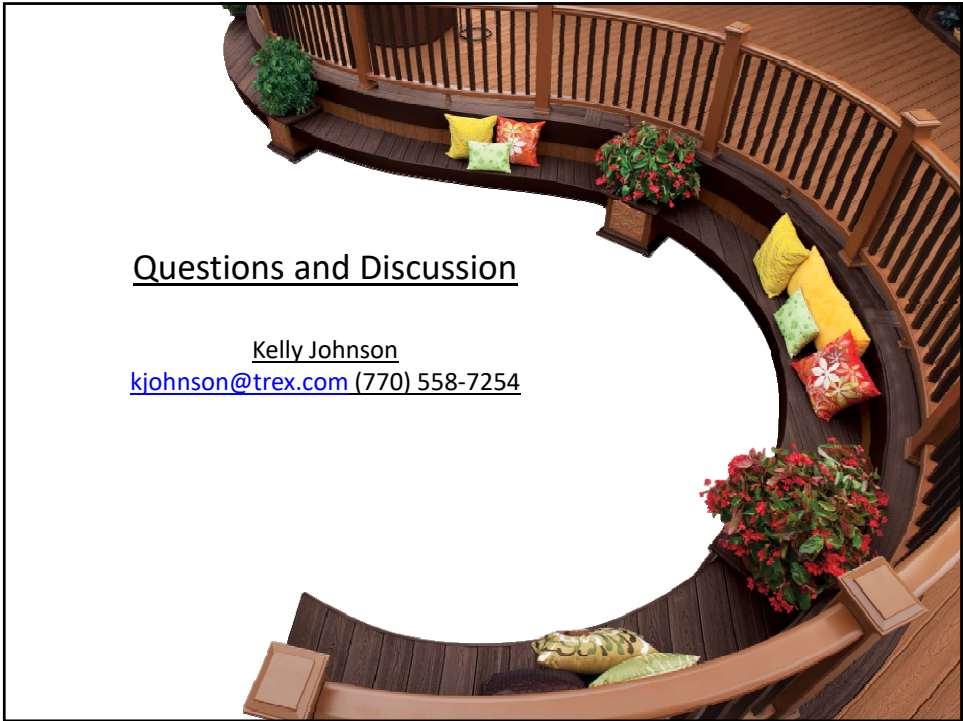
 **REDUCE**  
 **REUSE**  
 **RECYCLE**  


---

 **RETHINK!**

- Reusable bags
- Repurpose bags
  - Trash can liners
  - Doggie doo bags
- Recycle bags and packaging at local grocery stores
- Rethink before you trash

Proprietary and Confidential Information 18



Questions and Discussion

Kelly Johnson  
[kjohnson@trex.com](mailto:kjohnson@trex.com) (770) 558-7254