

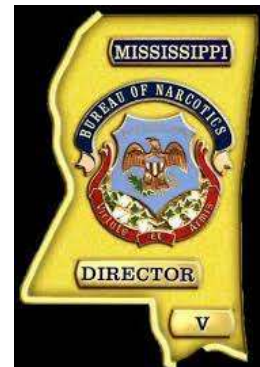
Dangerous Drugs & Clandestine Labs

AGENT DUSTIN STOGNER
MISSISSIPPI BUREAU OF NARCOTICS (MBN)



About the MBN

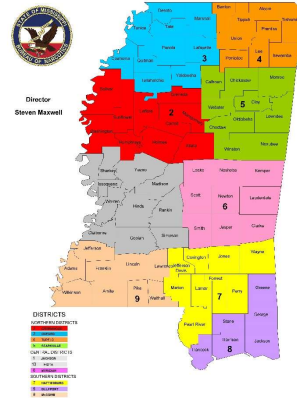
- Created by statutory authority in 1971, the Mississippi Bureau of Narcotics enforces the State's Uniform Controlled Substances Law. As the State's primary drug enforcement agency, the MBN accomplishes its mission by confiscating drugs and other contraband, and by arresting suspected drug violators for prosecution under applicable state and federal laws.



About the MBN

Divided into nine districts, local offices include:

1. Jackson
2. Greenwood
3. Oxford
4. Tupelo
5. Starkville
6. Meridian
7. Hattiesburg
8. Gulfport
9. McComb



Dangerous Drugs (Methamphetamine)

What is methamphetamine?

- Methamphetamine is a powerful, highly addictive stimulant that affects the central nervous system. Crystal methamphetamine is a form of the drug that looks like glass fragments or shiny, bluish-white rocks.



Dangerous Drugs (Fentanyl)

What is fentanyl?

- Fentanyl is a synthetic opioid typically used to treat patients with chronic severe pain or severe pain following surgery. Fentanyl is a Schedule II controlled substance that is similar to morphine but about 100 times more potent.



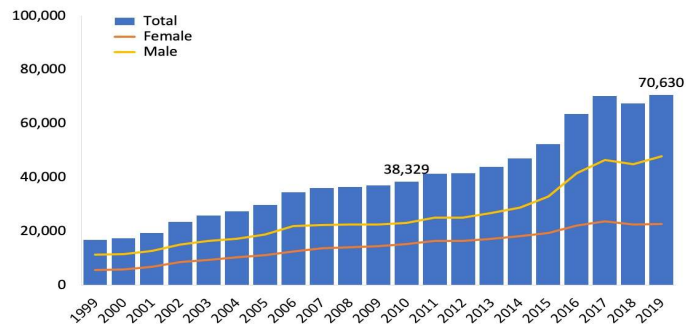
Facts about Fentanyl

- Illicit fentanyl, primarily manufactured in clandestine labs, is being distributed across the country and sold on the illegal drug market.
- Fentanyl is being mixed in with other illicit drugs to increase the potency of the drug, sold as powders and nasal sprays, and increasingly pressed into pills made to look like legitimate prescription opioids.
- 42% of pills tested for fentanyl contained at least 2 mg of fentanyl, considered a potentially lethal dose.



Drug Overdoses

**Figure 1. National Drug-Involved Overdose Deaths*
Number Among All Ages, by Gender, 1999-2019**



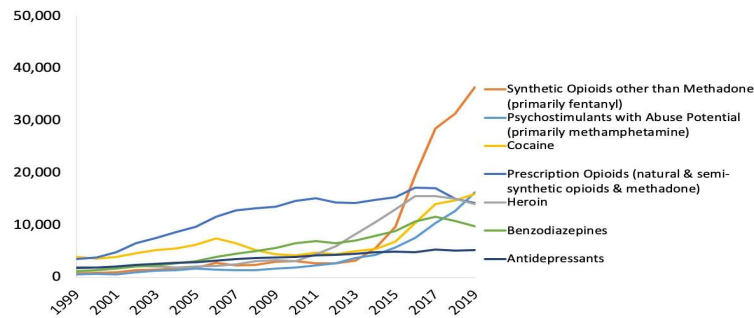
*Includes deaths with underlying causes of unintentional drug poisoning (X40–X44), suicide drug poisoning (X60–X64), homicide drug poisoning (X85), or drug poisoning of undetermined intent (Y10–Y14), as coded in the International Classification of Diseases, 10th Revision. Source: Centers for Disease Control and Prevention, National Center for Health Statistics. Multiple Cause of Death 1999-2019 on CDC WONDER Online Database, released 12/2020.

Overdoses

- In 2019, nearly 50,000 people in the United States [died from opioid-involved overdoses](#).¹ The misuse of and addiction to opioids—including [prescription pain relievers](#), [heroin](#), and synthetic opioids such as [fentanyl](#)—is a serious national crisis that affects public health as well as social and economic welfare.

Drug Overdoses

Figure 2. National Drug-Involved Overdose Deaths*, Number Among All Ages, 1999-2019



*Includes deaths with underlying causes of unintentional drug poisoning (X40–X44), suicide drug poisoning (X60–X64), homicide drug poisoning (X85), or drug poisoning of undetermined intent (Y10–Y14), as coded in the International Classification of Diseases, 10th Revision. Source: Centers for Disease Control and Prevention, National Center for Health Statistics. Multiple Cause of Death 1999–2019 on CDC WONDER Online Database, released 12/2020.

Overdoses (Naloxone)

- Naloxone is a medicine that rapidly reverses an opioid overdose. It is an opioid antagonist. This means that it attaches to opioid receptors and reverses and blocks the effects of other opioids. Naloxone can quickly restore normal breathing to a person if their breathing has slowed or stopped because of an opioid overdose. But, naloxone has no effect on someone who does not have opioids in their system, and it is not a treatment for opioid use disorder. Examples of opioids include heroin, fentanyl, oxycodone (OxyContin®), hydrocodone (Vicodin®), codeine, and morphine.



Clandestine Labs

Where can meth labs be?

- Houses
- Rooms in motels
- Farm houses, barns
- Trailers, mobile homes, Commercial buildings
- Industrial parks
- Remote locations (desert, forest, etc)
- Orchards
- Caves or Underground



Clandestine Labs

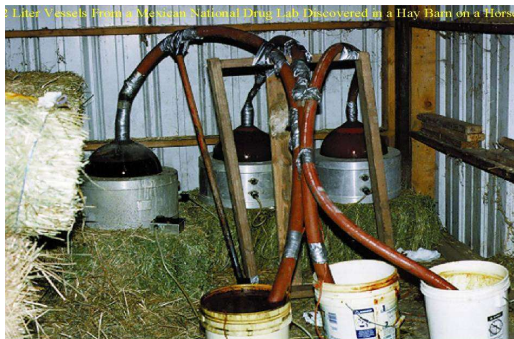
For every One Pound (1 lb) of Methamphetamine
Manufactured, How much Hazardous Waste is Created?

6 Pounds!!

Clandestine Labs

Types of chemicals found in meth labs

- Flammable Liquids
- Flammable Solids
- Acids
- Bases
- Oxidizers
- Reactive Metals
- High Pressure Acid Gas



Clandestine Labs

Flammable Liquids

- Acetone
- Alcohol
 - Denatured Alcohol (Ethanol)
 - Methanol (Wood Alcohol)
 - Isopropyl Alcohol (Rubbing Alcohol)
- Coleman Fuel
- Ether (Starter Fluid)
- Toluene
- Xylene

Acids

- Hydrochloric Acid / HCl (Muriatic Acid)
- Hydriodic Acid / HI
- Hypophosphorous Acid / H_3PO_2
- Sulfuric Acid / H_2SO_4 (Battery Acid)

Clandestine Labs

Reactive Metals

- Lithium Metal / Li
- Sodium Metal / Na



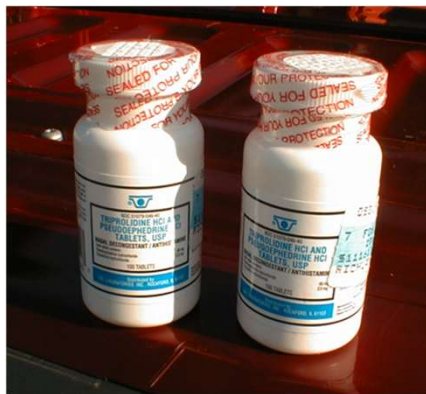
Clandestine Labs



Clandestine Labs



Clandestine Labs



Clandestine Labs



Clandestine Labs



Lithium



Mississippi Bureau of Narcotics



6090 I-55 South Frontage Rd.
Byram, MS 39273

Tip line number:
1-800-844-6272

