

The average person generates 4.3 pounds of trash a day. ALOT of this trash can end up on our Mississippi roadways and in our waterways as litter, whether it's deliberate or accidental.



A litter survey commissioned by the Mississippi Department of Transportation revealed that litter rates were 30% higher than in other states. It also costs MDOT more than \$3 million a year to remove litter from state maintained highways.

So what is MDOT doing to make a difference?

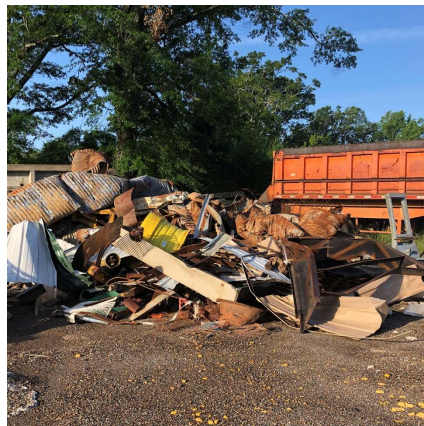
We Recycle

MDOT recycles on quite a massive scale. Besides the normal office recycling of paper and plastics, spent motor oil is contained and recycled in large quantities



Sheet metal signage that is damaged or replaced

Culverts, damaged guardrail, scrap collected from roadway debris



We ReUse

Undamaged sign posts & guardrail



Asphalt milling is reused for other operations

Proper Disposal



Paint barrels

Equipment washout



MDOT implements several litter prevention programs



Campaigns



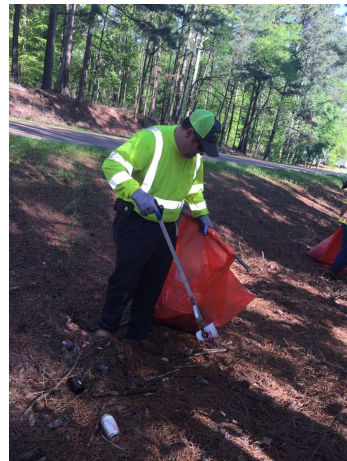
Community Outreach



Advertising

Trash Bash

Each of our 6 districts, including the Jackson Administration, holds an annual event called Trash Bash. Our employees have the opportunity to go out and pick up trash from our MS highways. For 2021, we had 1,207 volunteers that removed 4,178 bags of trash in just one day.



Adopt A Highway

- MDOT offers private and civic organizations, individuals and families an opportunity to help keep Mississippi litter free
- Volunteers adopt sections of highway to show pride in MS or in memory of a family member
- MDOT provides at no cost to the adopter:
 - Signage displaying the name of the adopting group or individual
 - For section clean ups: safety signs, safety vests, gloves, bags, and removal of bagged litter



Adopt-an-Interchange Program

- This program was developed by MDOT to provides cities, towns, and counties the opportunity to beautify interstate interchanges, major highway intersections, and city/sectional corridors to help make a great “first impression” to the entrance of their communities. Litter control, mowing, and landscaping are integral parts of this.



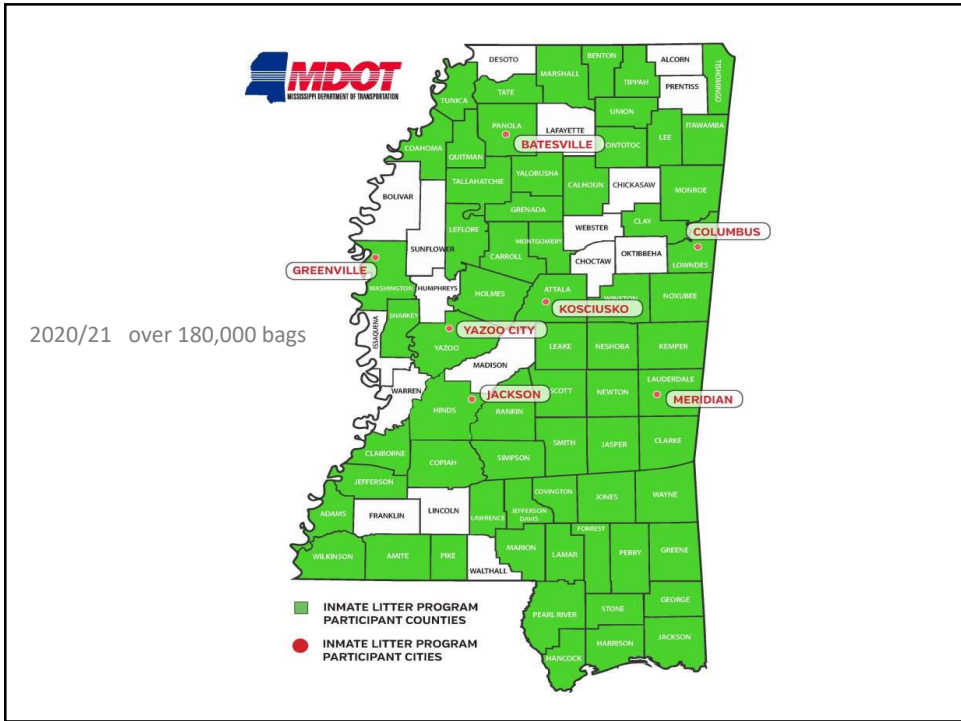
Inmate Litter Removal Program

- The Mississippi Transportation Commission partner with local law enforcement departments at the county and municipal level using prisoners to remove litter from state maintained highways.



Vehicle provided through a grant funded by:





Litter Prevention Education

Here at MDOT, we believe educational awareness will prompt behavioral change.



Myrtle the Turtle

We target K-3rd grade school age children





- **Storm Water Education** – We have established a Storm water Management Plan to protect and improve water quality while fulfilling MDOT’s mission of providing and supporting a safe and integrated transportation system that enhances the state.



The EnviroScape Watershed Education Model provides an interactive, hands-on demonstration of the sources and effects of water pollution. The model demonstrates how stormwater runoff carries pollutants through the watershed to ponds, lakes, rivers, bays and oceans. The model also shows how management practices help prevent runoff pollution. The EnviroScape is appropriate for all ages, including adults, in groups no larger than 25 people.



Community Outreach



- Environmental Events
- Litter Events
- Community Events
- Teachers Conferences
- Town or City Events
- Church or School Events

Media Spots



New_Litter_Spot_Truck_King.mp4



Partnerships



Law Enforcement



Local Solid Waste



Keep Mississippi Beautiful



Project RezWay

It gets a little dirty



It can be a little dangerous



So why do we do it?



Because WE Care!



- Questions?
- Comments?

- Complaints? Press here.....

