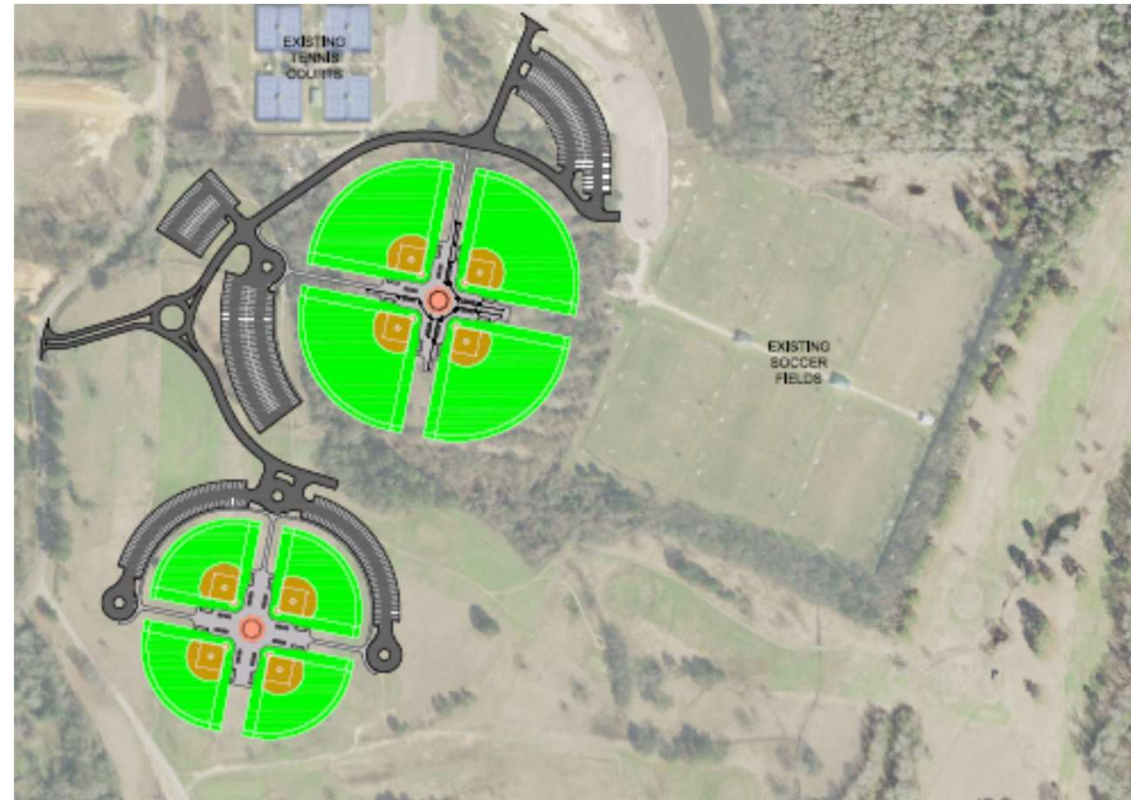




Laurel Sportsplex Expansion Reclaiming a Pre-Subtitle D Landfill

April 5, 2023



Susan Boone Vincent Sportsplex

- Original Construction: 1996 – 1998
 - 6 baseball fields
 - 6 full size soccer fields
 - 4 tennis courts
- Natatorium added in 1999 – 2000
- As early as 2004 – where do we go next?

Susan Boone Vincent Sportsplex



2009 Dixie Youth World Series



What can we do with this landfill?



~13 acres

Operated as an unregulated landfill from 1950s through the 1970s

What can we do with this landfill?



~13 acres

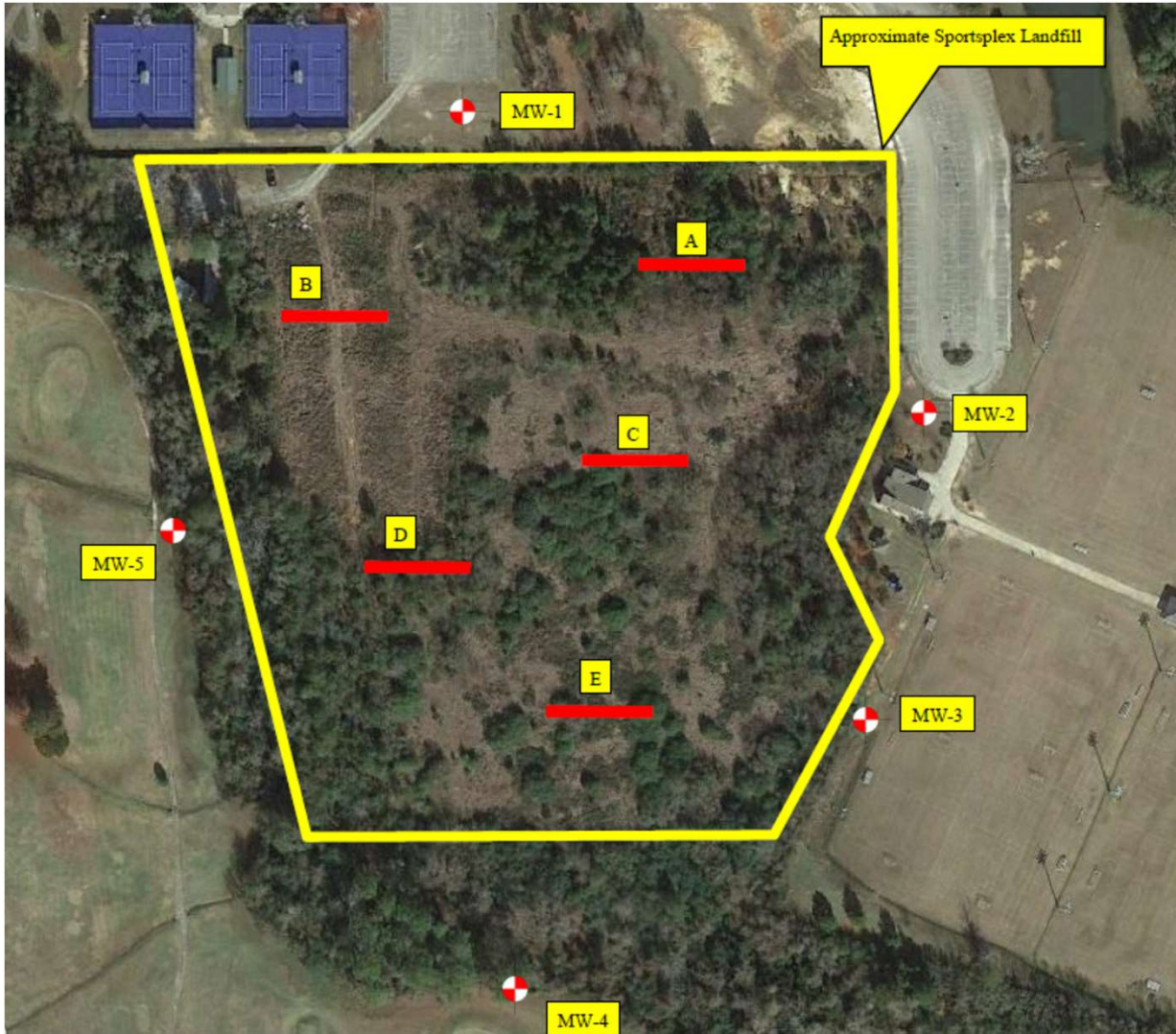
Operated as an unregulated landfill from 1950s through the 1970s

EPA Brownfield Program

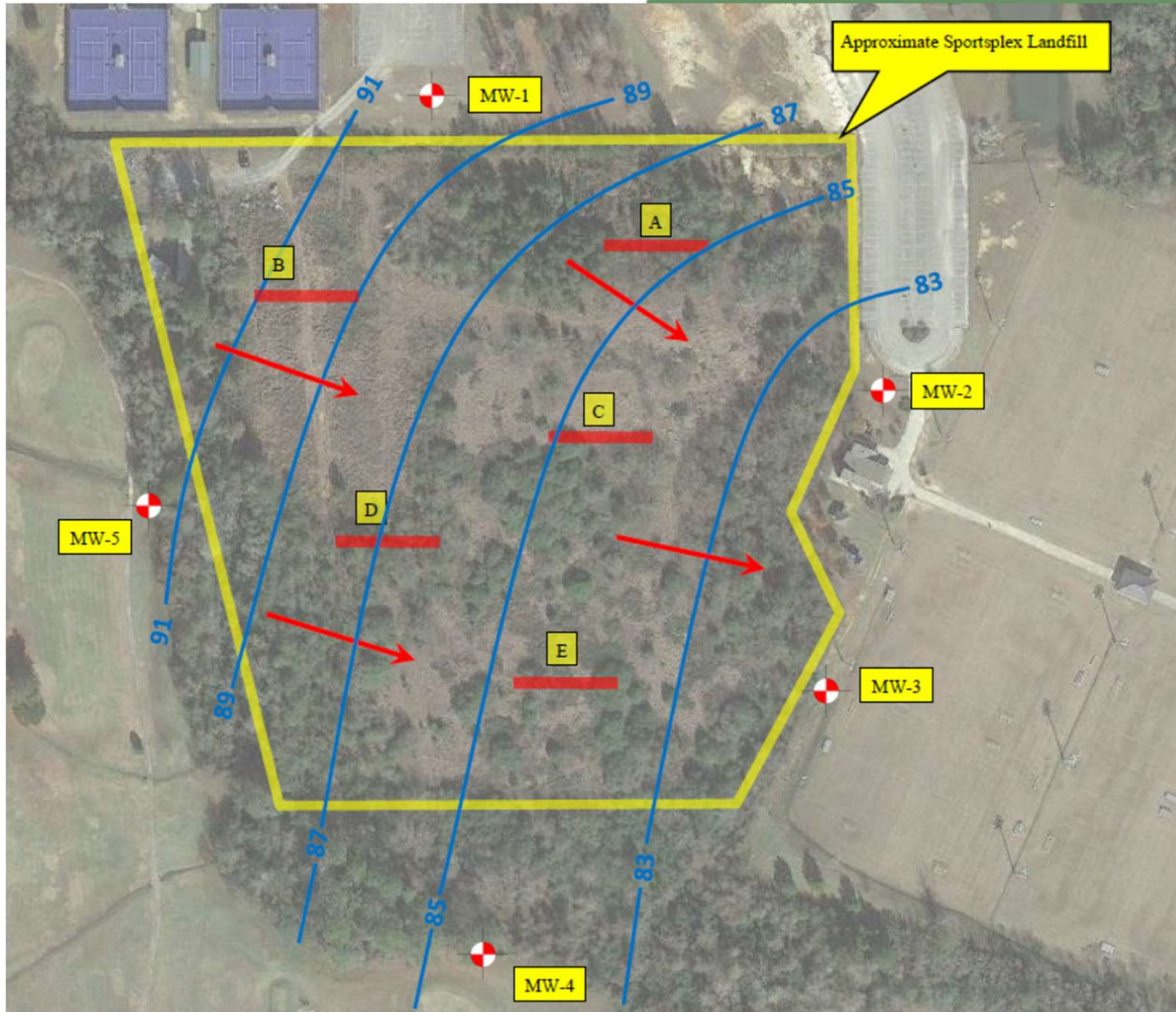
- Phase I ESA – March 2015

- Phase II ESA – December 2015
 - 5 test trenches (100' x 4' x {6'-13'} deep)
 - 5 GW monitoring wells

Phase II Environmental Site Assessment

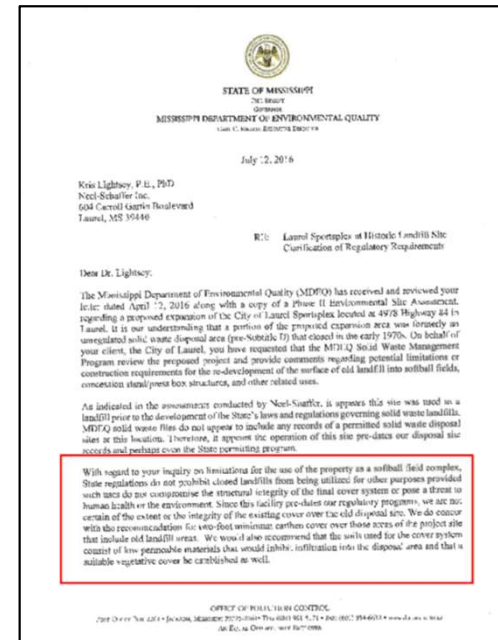
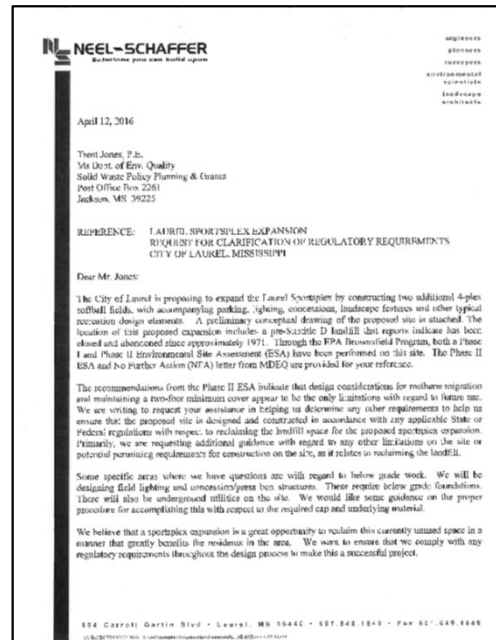
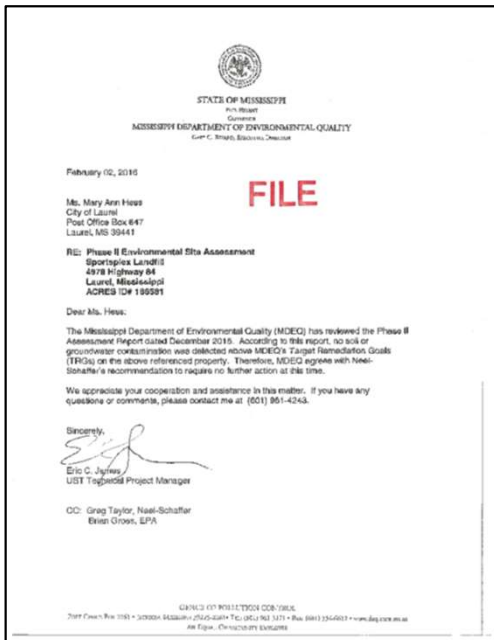


Phase II Environmental Site Assessment



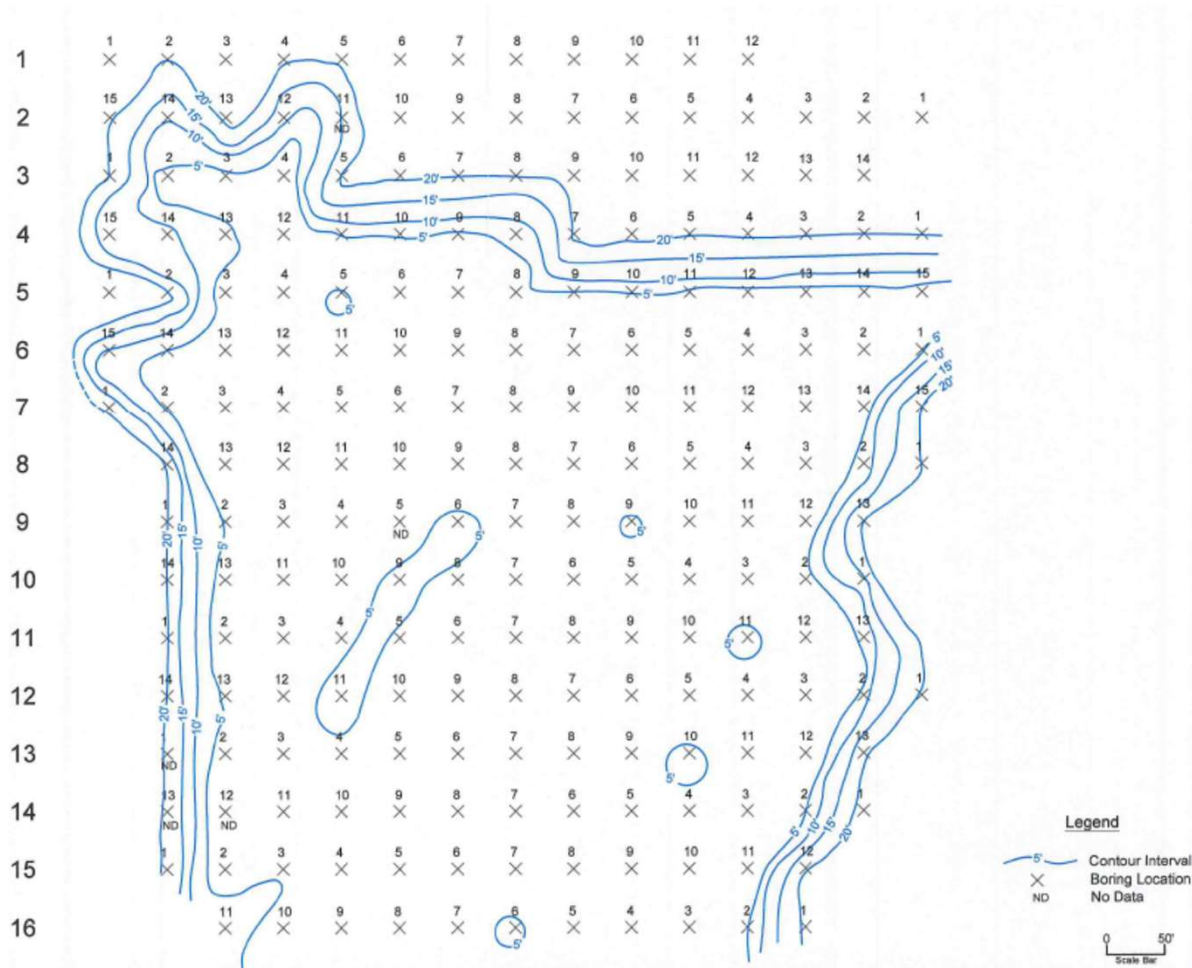
MS Dept of Environmental Quality

- February 2016 – MDEQ NFA Letter
- April 2016 – Began coordination with the MDEQ solid waste division
- July 2016 – MDEQ Concurrence



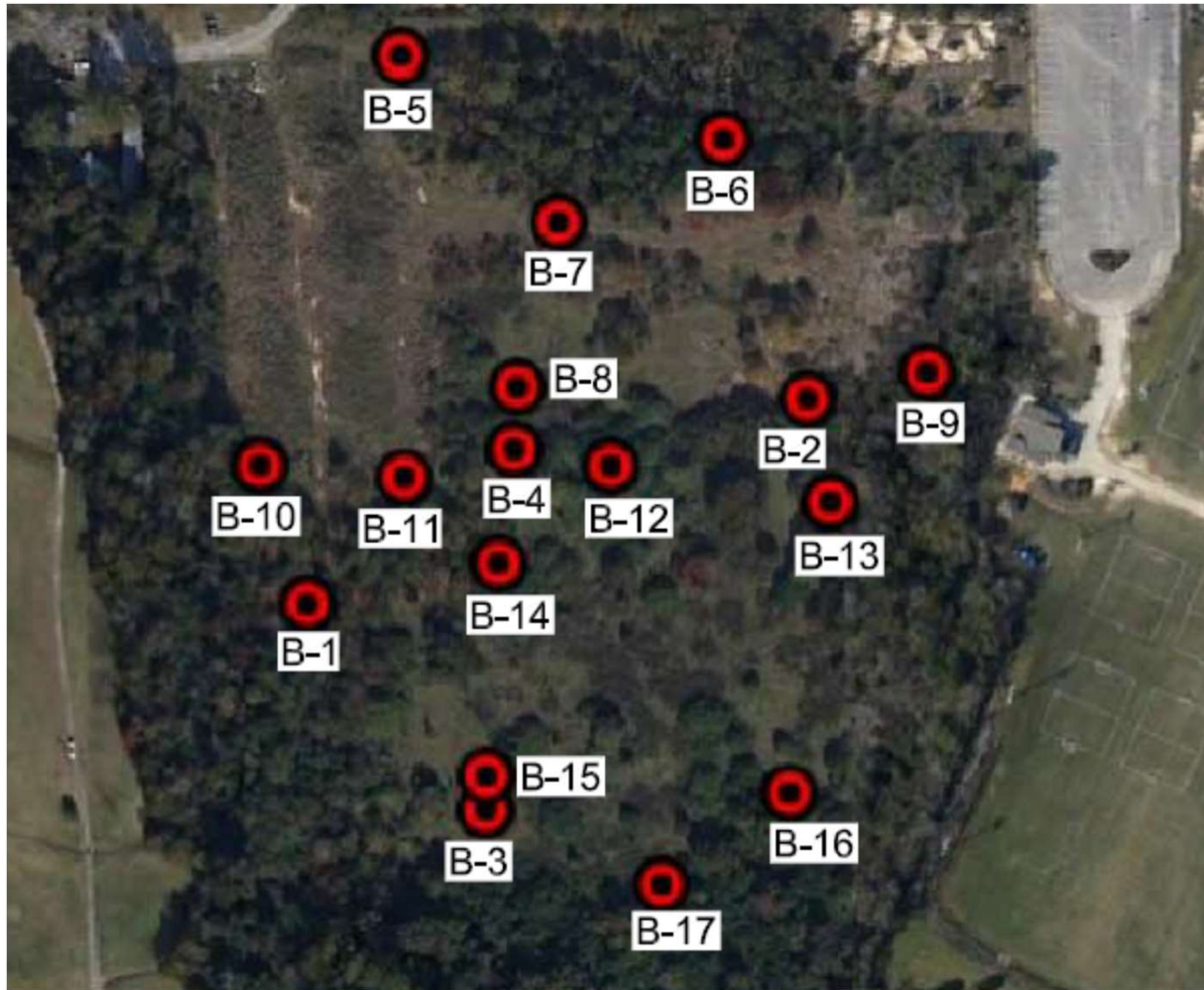
Earthen Cap Verification Study

- August 2016



- Track-mounted Geoprobe
- 50' x 50' grid
- Push sample core barrels to waste or 20' terminal depth

Geotechnical Bores



- 17 geotechnical borings
- Light Poles and Press Box
- 25 to 35 feet

MS Dept of Environmental Quality



Mississippi Department of Environmental Quality

[HOME](#) [ABOUT](#) [ACCESSIBILITY](#) [AIR](#) [LAND](#) [WATER](#) [GEOLOGY](#) [NEWS](#) [REGULATIONS](#) [RESTORATION](#) [PERMITS](#) [enSEARCH](#) [HOW DO I?](#)

[MDEQ](#) > [Land](#) > [Waste Division](#) > [Solid Waste Management and Recycling Programs](#) > [Mississippi Nonhazardous Solid Waste Corrective Action Trust Fund Program](#)

Mississippi Nonhazardous Solid Waste Corrective Action Trust Fund Program

Proper Maintenance Of A Closed Landfill Final Cover System Helps Protect The Environment And Public Health

The Mississippi Nonhazardous Solid Waste Corrective Action Trust Fund (CATF) Program is one of several funding assistance programs administered by the MDEQ Waste Division's Policy, Planning, & Special Programs Branch. This program provides an opportunity for financial assistance to site owners to conduct corrective actions at closed or abandoned municipal solid waste (MSW) landfills that closed prior to the effective date of the Federal Subtitle D Regulations. The assistance can be used for preventive or corrective actions due to a real or potential release of contaminants from the landfill or for monitoring or abating other problem conditions at an eligible closed landfill. This fund may be utilized to assess the impacts (onsite or offsite) from potential groundwater contamination and landfill gas migration and also to remediate contaminants at an old closed landfill.

Under current state law, only closed sanitary or municipal landfills that accepted household garbage during the life of the landfill are considered eligible for funding assistance from CATF. In addition, only those closed landfills that ceased receiving waste prior to the effective dates of Federal Subtitle D Regulations: October 9, 1993 (>100 tons per day) or April 9, 1994 (<100 tons per day) are eligible for funding consideration through the CATF. Further information on the CATF can be found in the the [MS Nonhazardous Solid Waste Corrective Action Trust Fund Regulations](#).

The MDEQ has assisted various landfill owners with corrective action projects related to groundwater and surface water impacts, methane gas migration, repair of erosion and subsidence, and restoration of the final cover system at a number of old closed MSW landfills. If the MDEQ or a site owner determines that corrective actions appear necessary for an eligible closed or abandoned landfill site, a pre-project meeting should be arranged to discuss the specifics of a proposed corrective action project and the eligibility of expected project costs. Upon determination of the correction actions that are eligible for funding assistance, the site owner should complete a funding assistance application form (CATF-1) in order to receive formal consideration for funding assistance through the CATF Program. A complete application shall include a written narrative justifying the eligibility of the proposed project for funding assistance, appropriate maps and drawings, engineering and remediation work plans, and other pertinent information.

For additional information on the CATF Program and on closed landfills in the state, click on the Links listed below:

[CATF Eligibility Application Package \(CATF-1\)](#)

[Listing of Known Closed Municipal Solid Waste Landfills in Mississippi](#)



Planning for Corrective Actions

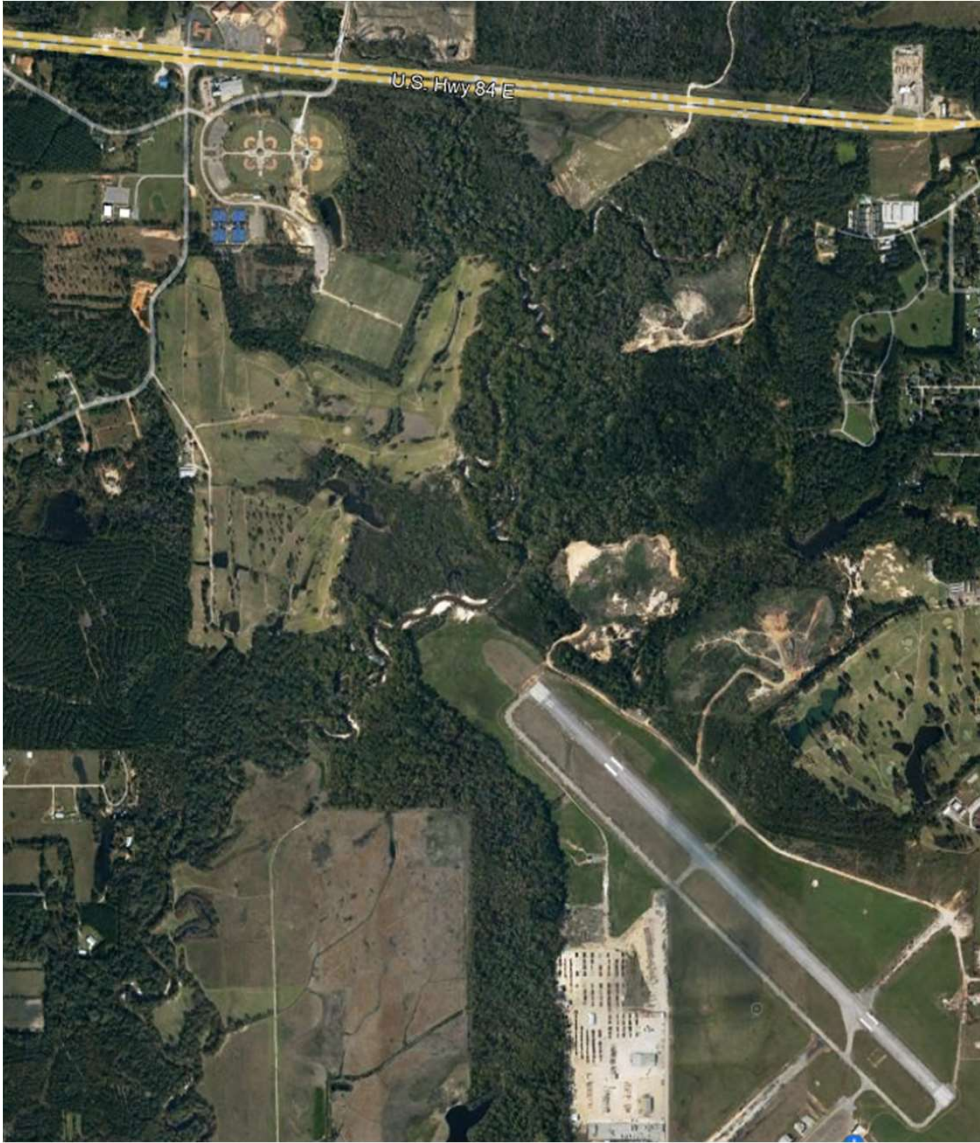
- Design an appropriate cap
- Develop a CQA Sampling and Testing protocol for cap construction
- Develop a Solid Waste Characterization & Management Plan
- Develop post construction methane monitoring and groundwater monitoring plans



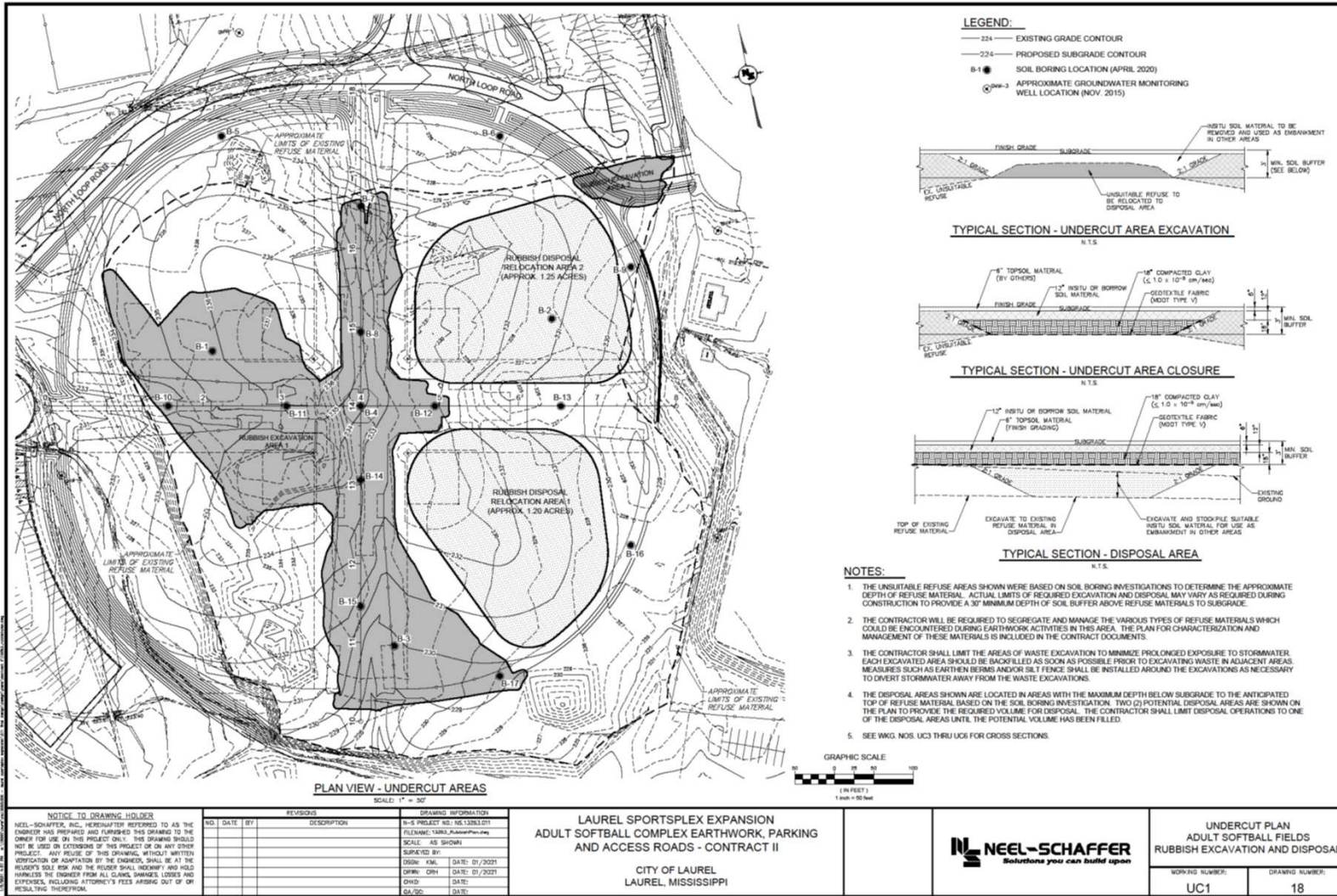
CAP Design

- Site was not level
- Attempting to stabilize and compact clay on waste
- Laurel Municipal Airport

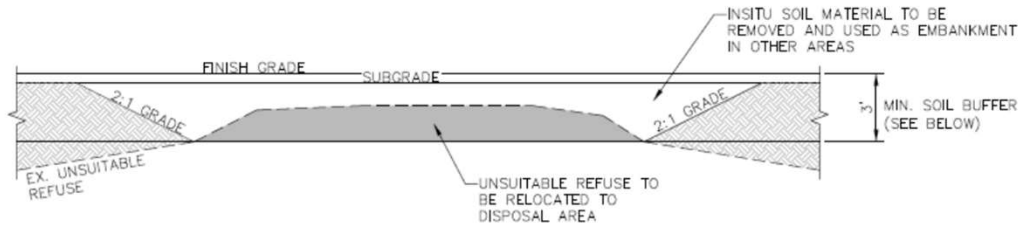
CAP Design



CAP Design

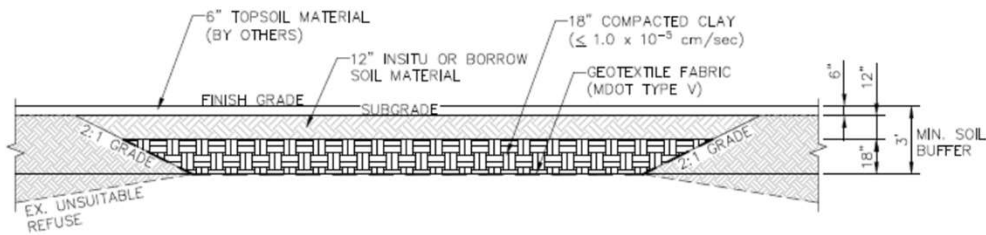


CAP Design



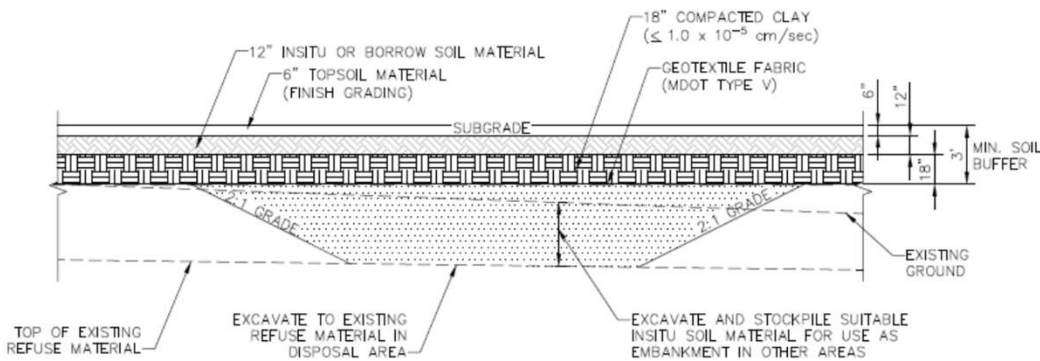
TYPICAL SECTION - UNDERCUT AREA EXCAVATION

N.T.S.



TYPICAL SECTION - UNDERCUT AREA CLOSURE

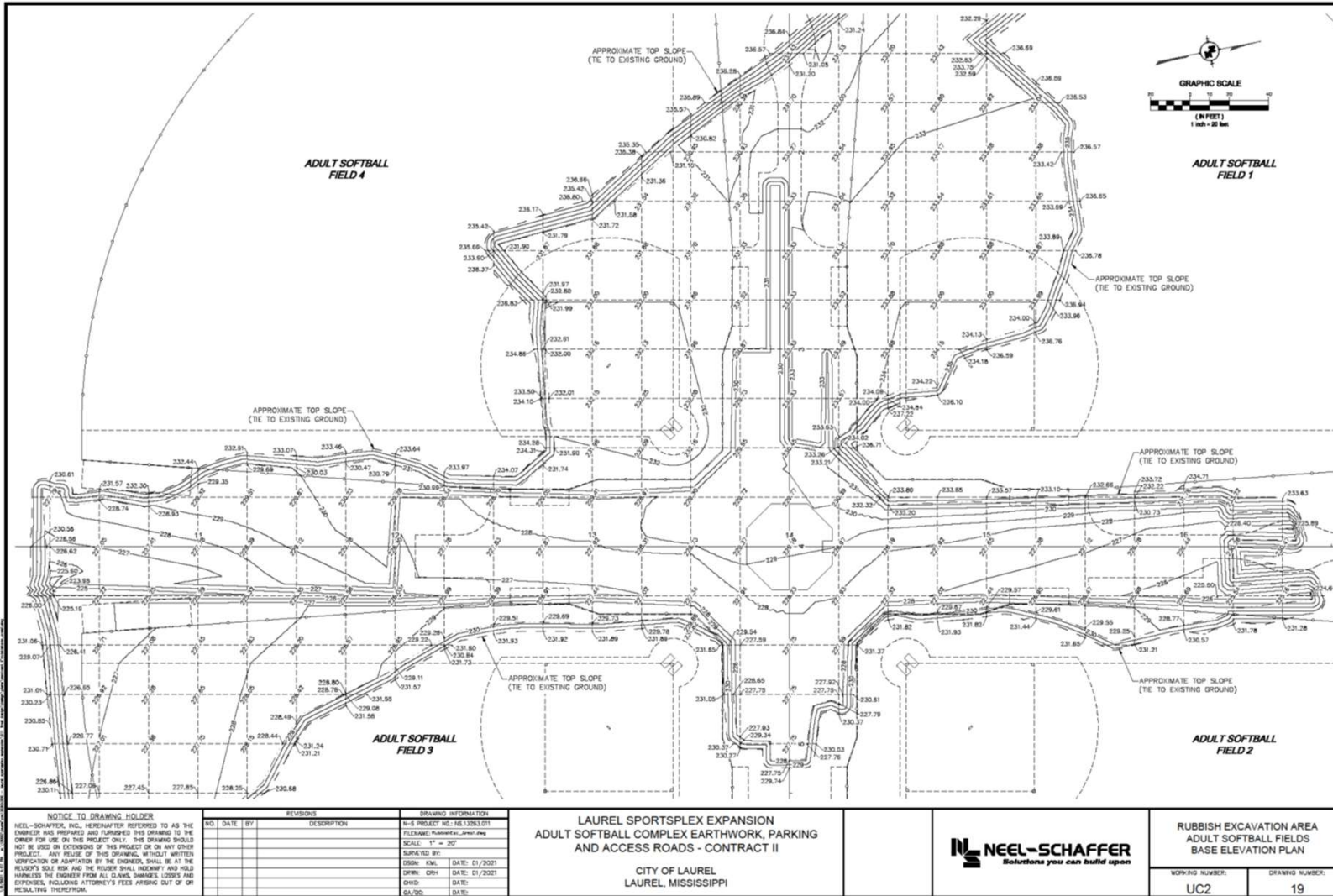
N.T.S.



TYPICAL SECTION - DISPOSAL AREA

N.T.S.

CAP Design

















































Discussion / Questions

