



NPDES Permits

Jennifer Sloan Ziegler, PhD, PE, ENV SP
April 5, 2023



Outline

- Definitions
- Environmental Laws 101
- NPDES Background
- NPDES 101
 - Permit Types
 - Effluent Limits
- NPDES Process
- NPDES Compliance

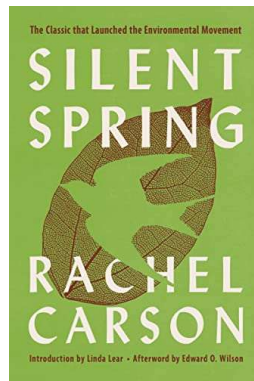
Definitions

- NPDES — National Pollutant Discharge Elimination System
- EPA — Environmental Protection Agency
- USACE or Corps — U.S. Army Corps of Engineers
- WOTUS — Waters of the United States
- TMDL — Total Maximum Daily Load
- BMP — Best Management Practices

Environmental Laws 101

New chemical pesticides began being used

1940's through 1960's



1962

Silent Spring published

Cuyahoga River fire

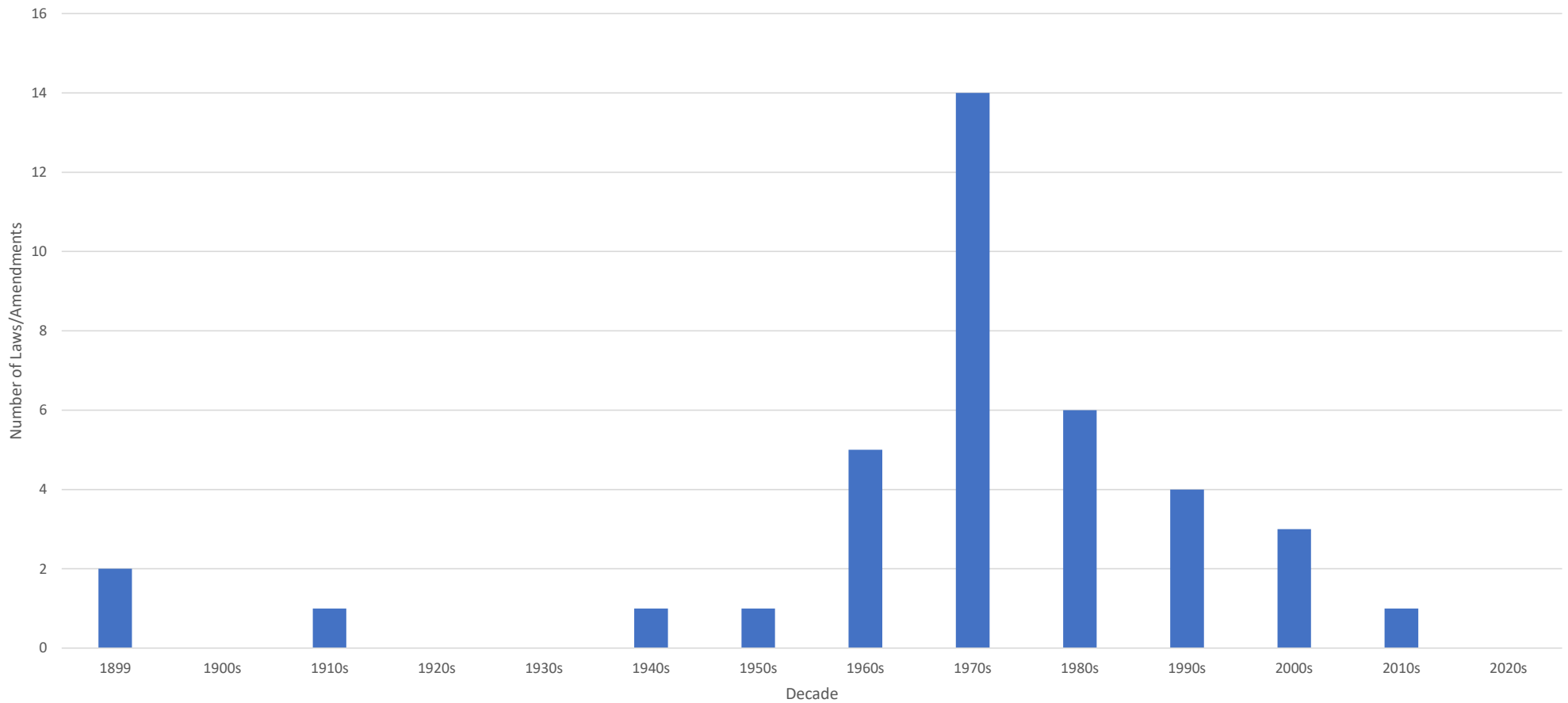
1969



1970

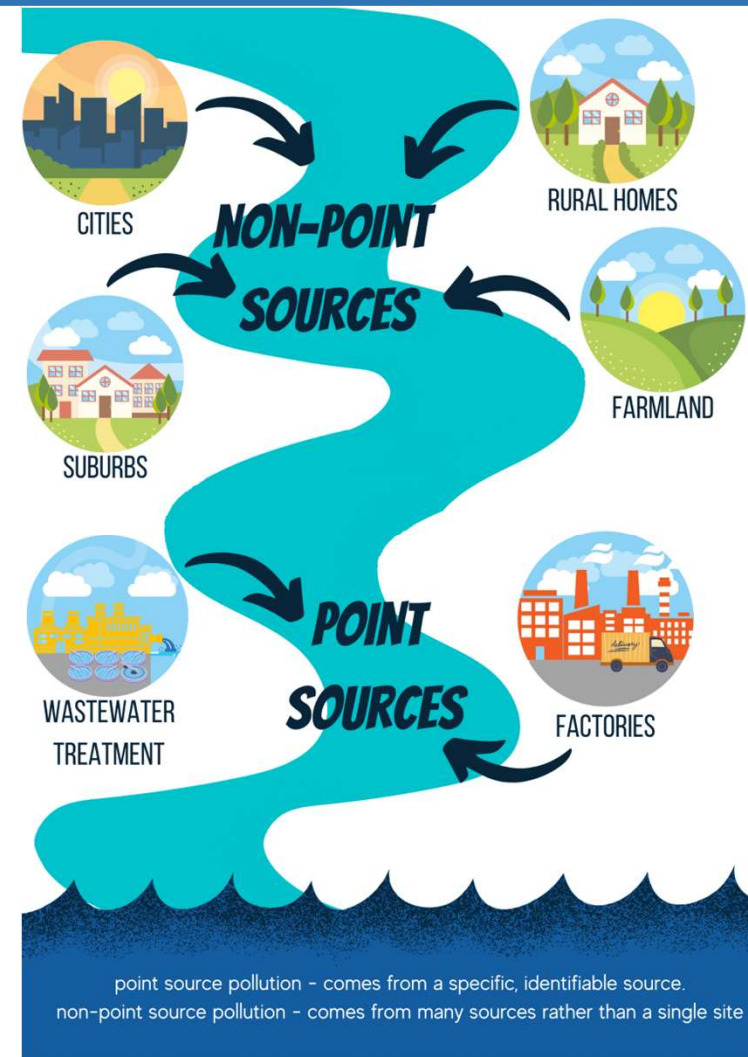
EPA established

Environmental Laws Passed Over Time



NPDES Background

- 1972 — Federal Water Pollution Control Act Amendment of 1972 a.k.a. the Clean Water Act of 1972 passed
- CWA established basic structure for regulating **point source** pollutant discharges into WOTUS*.
- Sources vary but include industrial, municipal, and agricultural waste discharges within 200 miles of a WOTUS.



NPDES 101

- Specify acceptable pollutant discharge limits.
- Two types of NPDES permits*:
 - Individual
 - General
- Bottom line: it is illegal to discharge without a permit.



Individual Permits

- Who?
 - All municipal treatment plants and “major industrial dischargers”
 - Certain stormwater discharges & other discharges
- What?
 - Specific application and permit process
 - Public comment period for each activity



General Permits

- Who?
 - Similar operations and discharge same types of wastes
 - Same effluent limits or conditions
 - Similar monitoring
- What?
 - Must apply to be covered by the permit
 - No public comment for each activity or permittee



Types of Effluent Limits

- Technology Based Effluent Limitations (TBELs)
- Water Quality-based Effluent Limitations (WQBELs)

EFFLUENT LIMITATIONS AND MONITORING REQUIREMENTS

Subject Item: **Outfall 001 (Non-contact storm water, excludes working face runoff, leachate, and all other wastewaters)**
 RPNT00000000001: **MSS049301-001**

Such discharges shall be limited and monitored by the permittee as specified below:

Parameter	Discharge Limitations							Monitoring Requirements		
	Quantity / Loading Average	Quantity / Loading Maximum	Quantity / Loading Units	Quality / Conc. Minimum	Quality / Conc. Average	Quality / Conc. Maximum	Quality / Conc. Units	Frequency	Sample Type	Which Months
<i>Chemical Oxygen Demand (COD) Effluent</i>	*****	*****	*****	*****	Report Annual Average	Report Annual Maximum	mg/L	Semiannually	Grab Sampling	Jan-Dec
<i>pH Effluent</i>	*****	*****	*****	6.0 Minimum	*****	9.0 Maximum	SU	Semiannually	Grab Sampling	Jan-Dec
<i>Solids (Total Suspended) Effluent</i>	*****	*****	*****	*****	Report Annual Average	90 Annual Maximum	mg/L	Semiannually	Grab Sampling	Jan-Dec

Technology Based Effluent Limitations (TBELs)

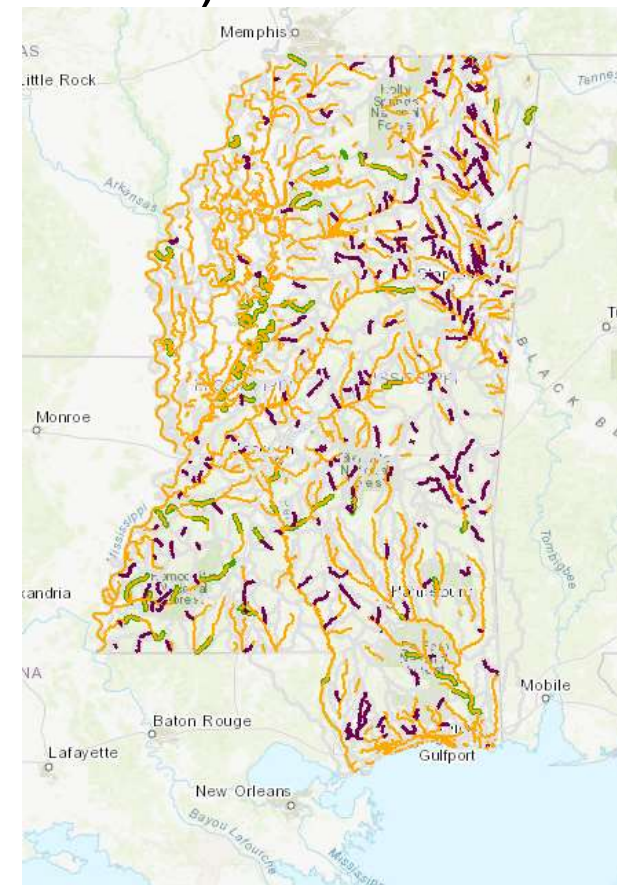
- Base limits on available treatment controls
 - National effluent limitation guidelines
 - Best professional judgement
 - National secondary treatment standards

U.S. Environmental Protection Agency
NPDES Permit Writers' Manual

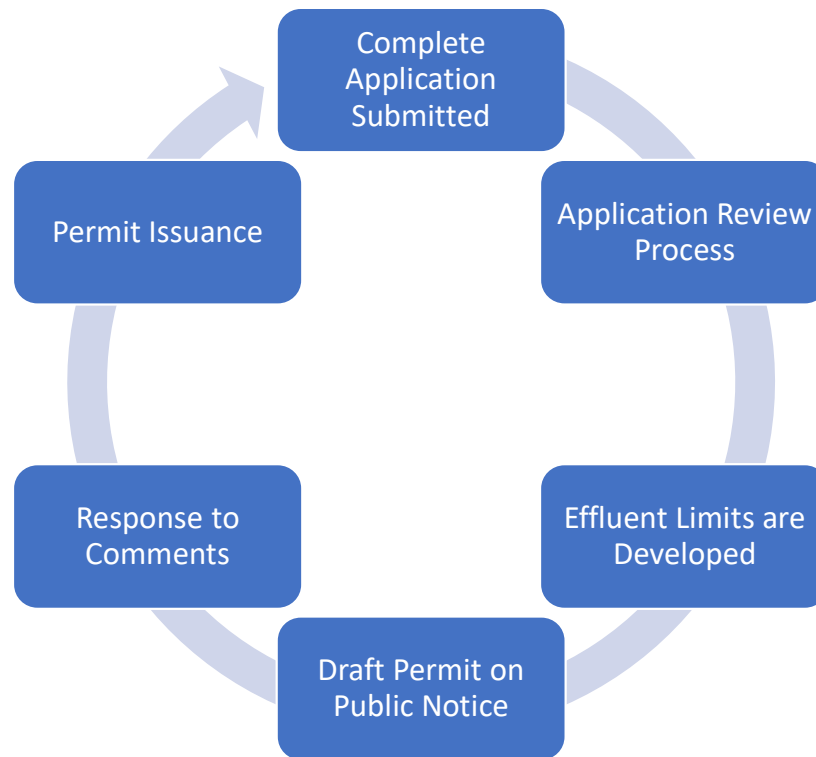


Water Quality-based Effluent Limitations (WQBELs)

- Based on meeting standards in the waterbody
 - 303(d) list
 - TMDLs
 - WLAs



NPDES Process



NPDES Compliance

- Compliance dictated by permit
 - Limitation requirements
 - Record-keeping requirements
 - Submittal/Action requirements
- Permit renewals every 5 years
 - Compare effluent limits and requirements
 - Discuss changes and options with MDEQ

MSS049301	Northeast Mississippi Solid Waste Management Authority	Water-NPDES	06/13/2000	05/31/2005
MSS049301	Northeast Mississippi Solid Waste Management Authority, NE Mississippi Regional Landfill	Water-NPDES	03/17/2015	02/28/2020
MSS049301	Northeast Mississippi Solid Waste Management Authority, Northeast Mississippi Regional Landfill	Water-NPDES	06/15/2020	05/31/2025



Questions

CYPRESS
Environment & Infrastructure